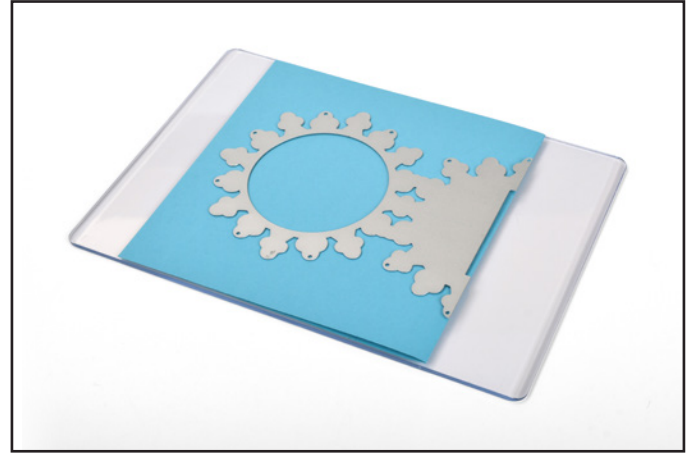




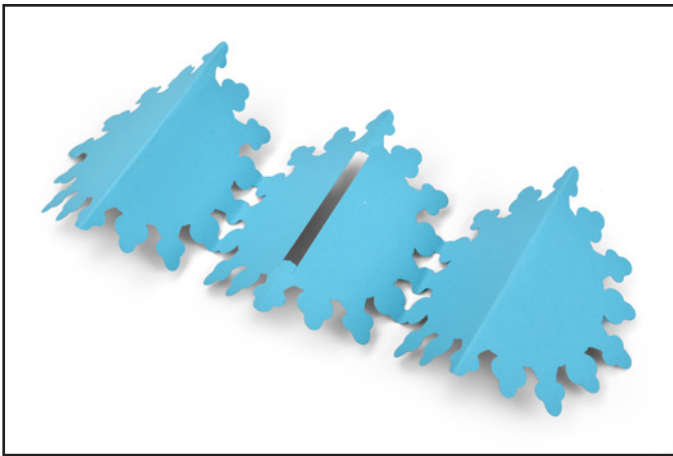
663175 Sizzix® Thinlits™ Die Set - Card, Snowflake Fold-a-Long™ by Jen Long



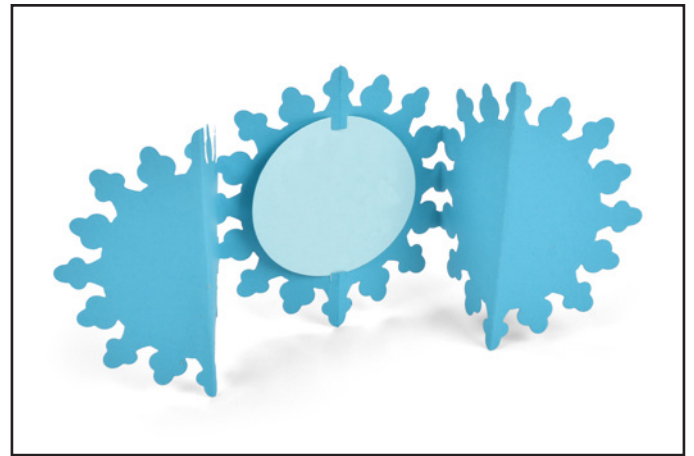
1. Fold-a-Long™ dies are designed to die-cut using the single-fold technique. This technique begins by folding a single piece of cardstock in half.



2. Place the folded cardstock on the Cutting Pad. Place the straight edge of the die just past the edge of the fold as shown.



3. Accordion fold the card as shown.



4. The center cutout is designed to fit between the top and bottom tabs in the center of the card.