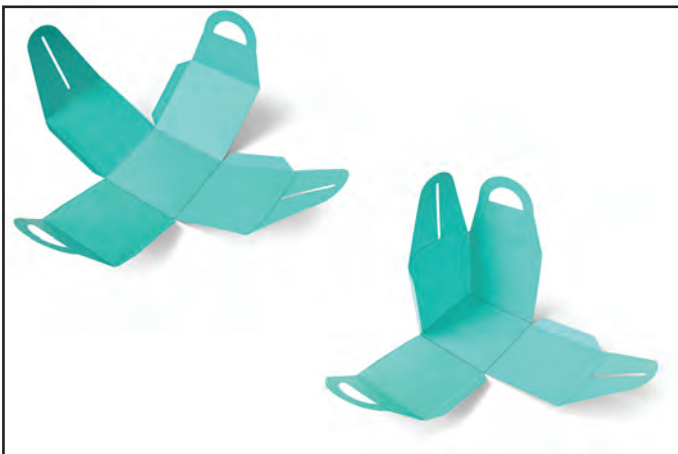




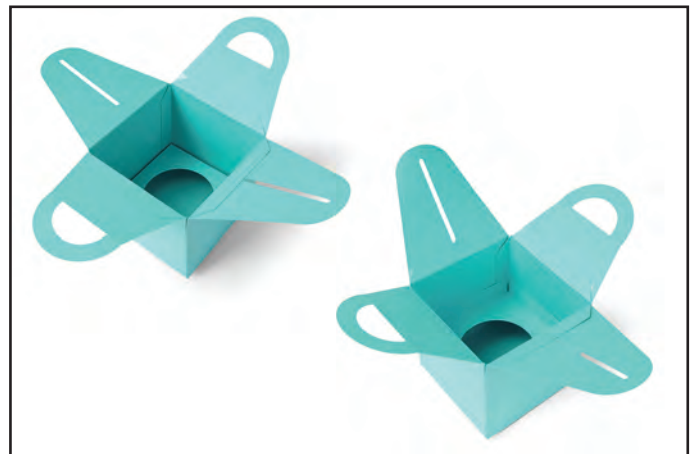
1. Die-cut from desired material



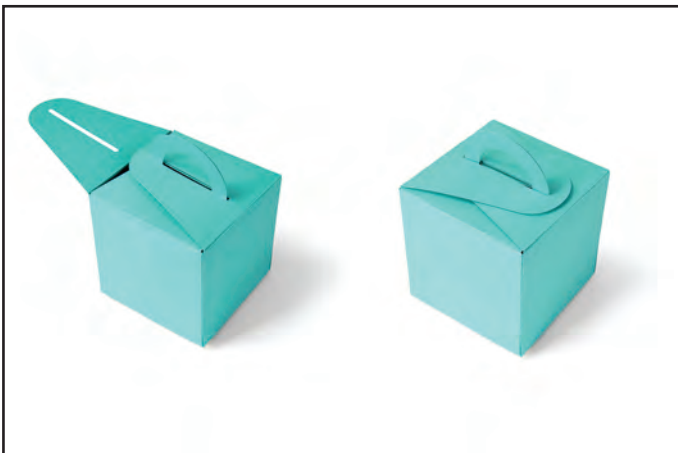
2. Adhere each the two handle pieces and two slotted pieces to one of the tabs of the square, side/bottom pieces. With a pair of scissors, trim off the right tab on each as shown.



3. Prepare the bottom panel by trimming off all four tabs of the remaining solid square piece. Attach each of the side pieces to the bottom panel with the handle sides and slot sides opposite of each other. Adhere the side tabs of each side to the adjoining side as shown.



4. Cupcake ring can either be adhered at the bottom of the box with the tabs folded down, or adjusted to a desired height with the tabs folded up.



5. The Box is closed by bringing the two handle pieces together and folding the slotted tabs over them, one at a time as shown.