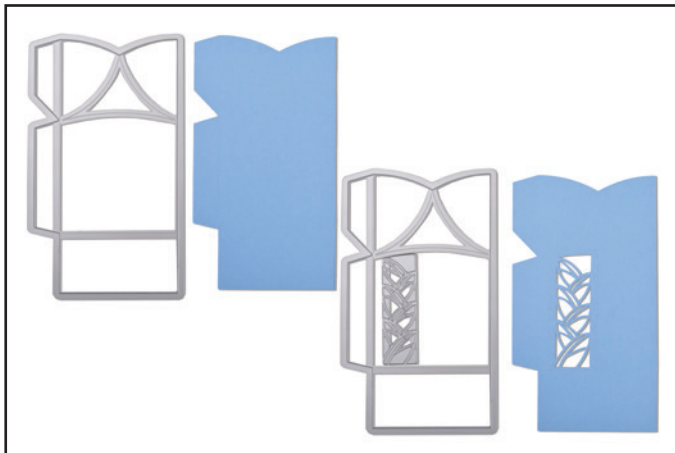
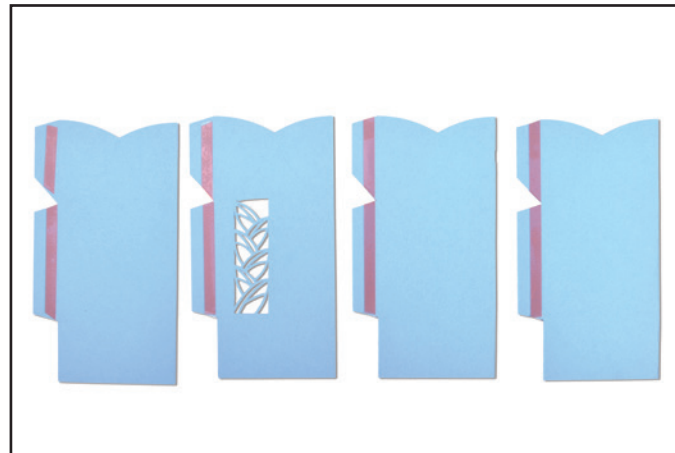




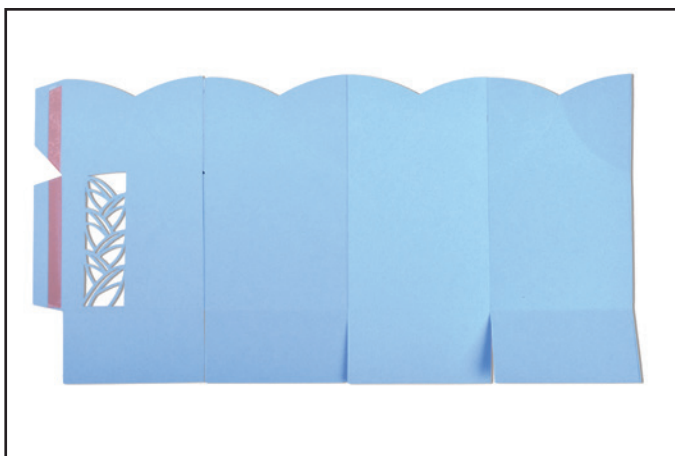
## 663179 Sizzix® Thinlits™ Die Set - Box, Petal Fold by Lynda Kanase



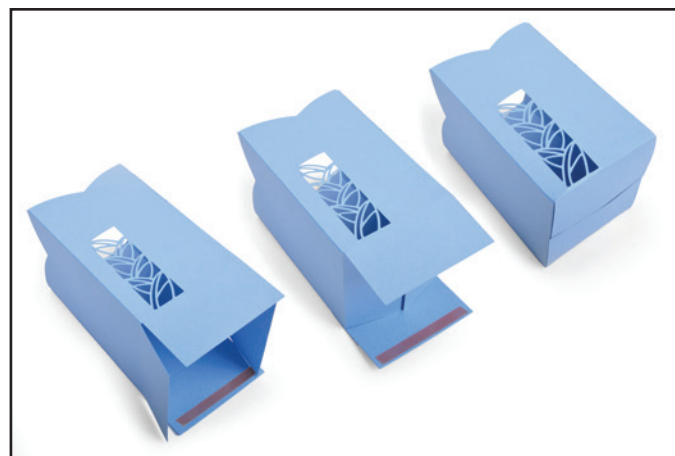
1. The sides of the Petal Fold Box can be die-cut either with or without an insert.



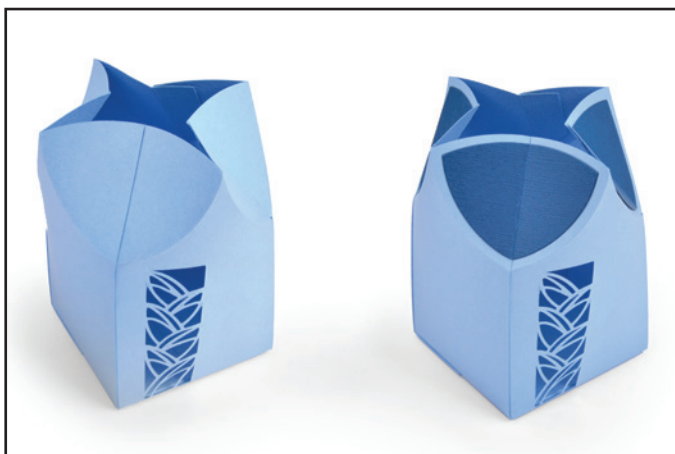
2. Die-cut four side panels, and apply adhesive to all of the tabs as shown. In this example, only one panel has an insert cutout.



3. Adhere all of the side panels together. If you want to cover the inside of the insert cutout with patterned paper or vellum, do so at this step. Paper layered on the panels should be attached to the opposite side shown in the image.



4. Adhere the final set of tabs to the open edge of the opposite panel to form the body of the box. Fold one of the opposite sets inward. Fold and adhere the remaining set in place.



5. Fold and apply colored inserts (if desired) to all four corners.



6. Gather the points between each corner, and push them downward in the center of the box. The top will snap into place.