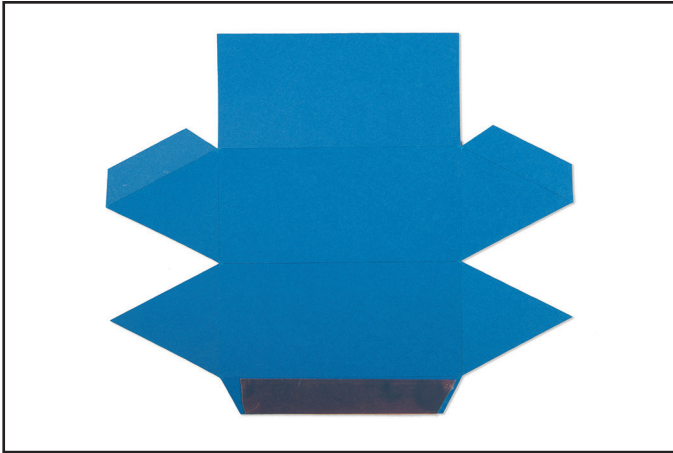
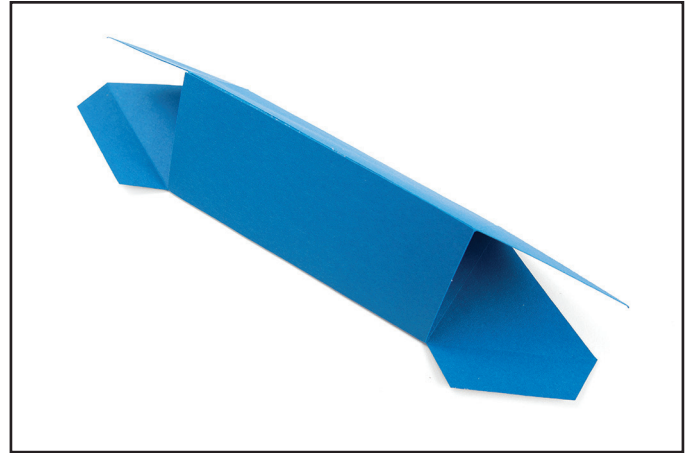




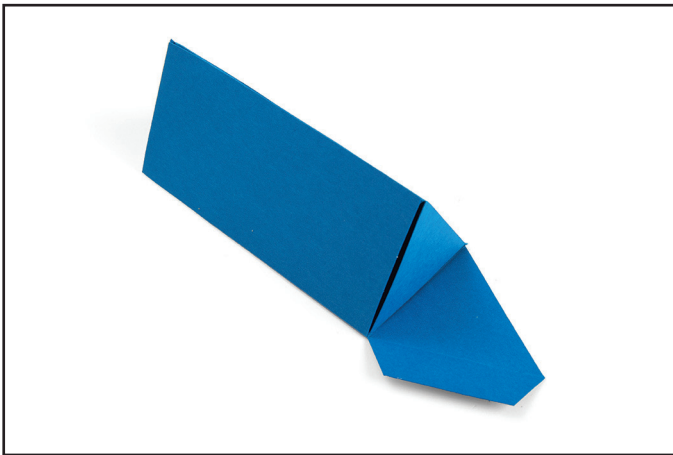
# 662954 Sizzix® Bigz™ L Die - Caja Triangular (Triangle Box) by Luisa Elena Guillén-K.



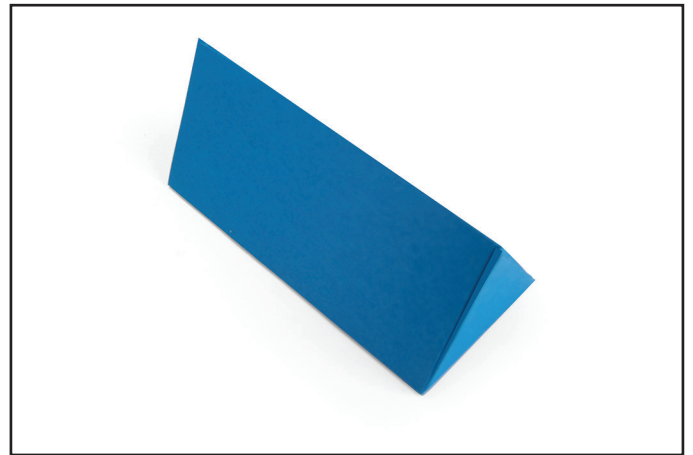
1. Die-cut out of desired material, and apply adhesive to the long tab on the finished side of the material.



2. Adhere the long tab to the inside of the corresponding edge to create a cylinder.



3. Fold inward the flaps without tabs.



4. Fold the tabs on the remaining flaps, and insert them into the box. Embellish as desired.